

Import DXF



ATOMS
Precision V2

Upon successful completion of this Tutorial, you will be able to understand how to import DXF files into ATOMS Precision.

DXF file contain two dimensional object contour created using CAD systems.

DXF File Import

Click **Start** tab. Click **Import Source base file from** Image source panel.

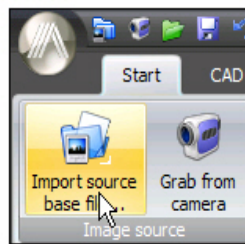


Figure 1

Select **Import DXF.dxf** from tutorials folder.

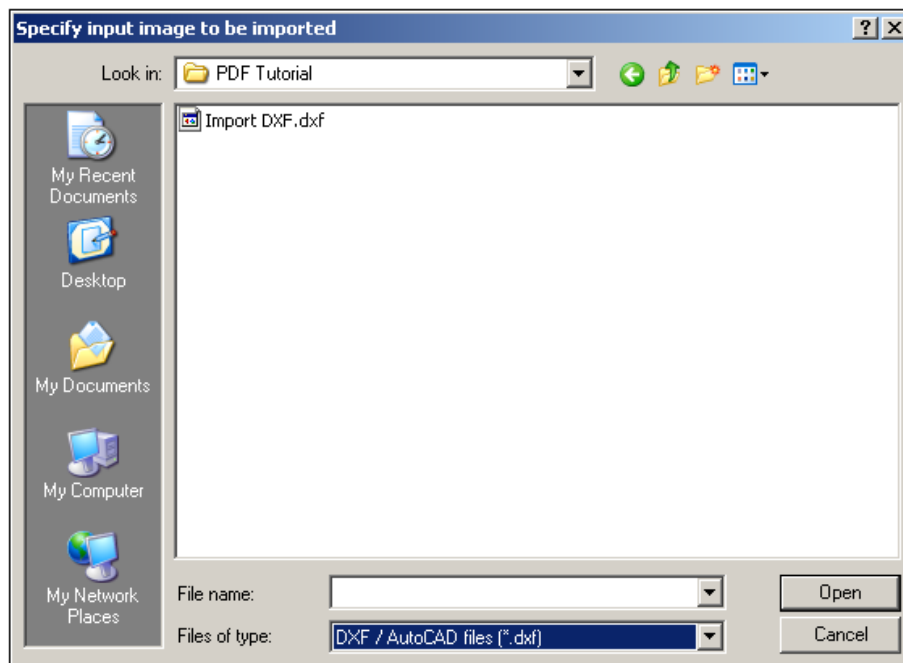


Figure 2

DXF file open in CAD contour tab.

- Click **Lock Pixel size** Button.
- Enter **Pixel size** values in Resolution tab.

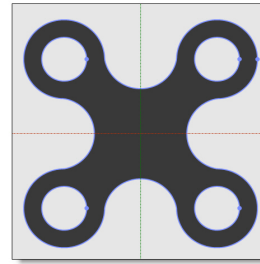


Figure 3

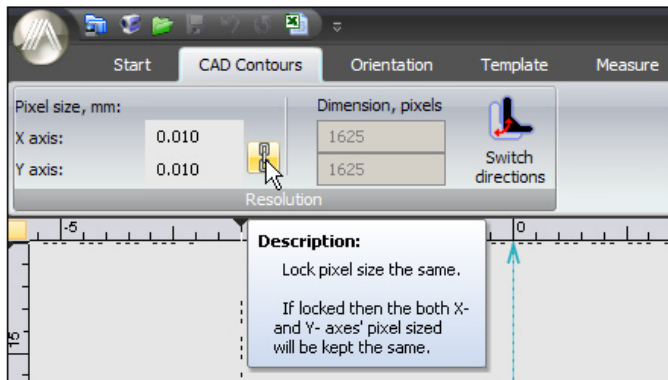


Figure 4

Toggle **Switch directions** command to select correct contour direction.

DXF Contour Display:

Object contour can be made visible or invisible by toggle **Show object contour** command can be found at Quick access menu bar.

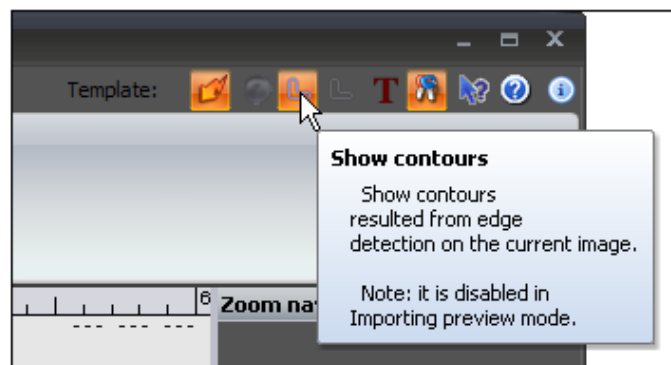


Figure 5

Export DXF Files

To export files as DXF, Click **Start** tab and use **Export Base File** command from Finish Importing panel.

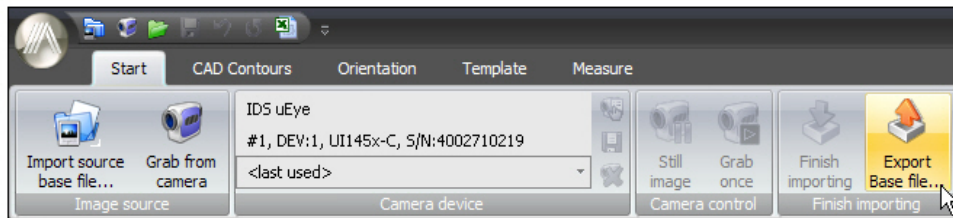


Figure 6

Disconnected DXF

Imported DXF file must have a closed contour profile. Disconnected DXF contour is invalid and cannot be used in ATOMS. If DXF contour is not connected, warning message window appears and caution marks shown at break points.

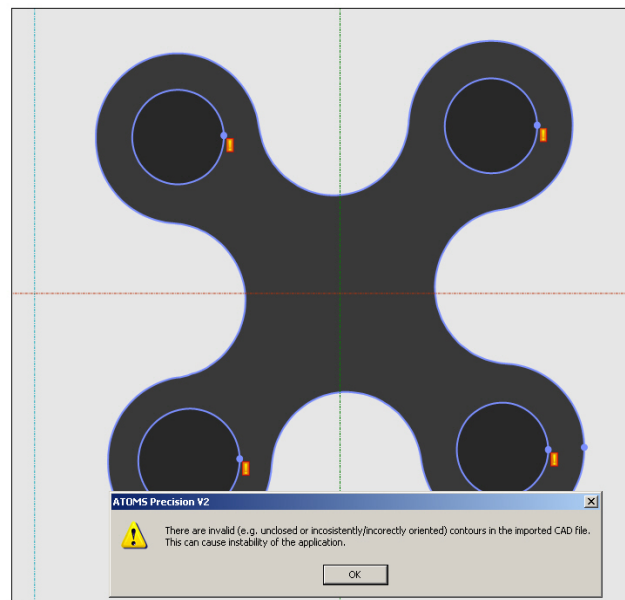


Figure 7

