

Create Inspection Reports



ATOMS  
Precision V2

In Atoms precision V2, Inspections reports are created during measurement process when templates applied over the inspection image.

Two types of inspection reports created during measurement process.

- Base report, created for individual inspection objects.
- Multiple measurement summary, which is a consolidation and analysis of all base reports, created during measurements using same template file.

## REPORT LOG PATH SETUP

To create reports, need to setup report log path in options menu.

- Go to **Application** menu and select **options** tab, select general options. Set report log path. Where new reports folder created using templates name.

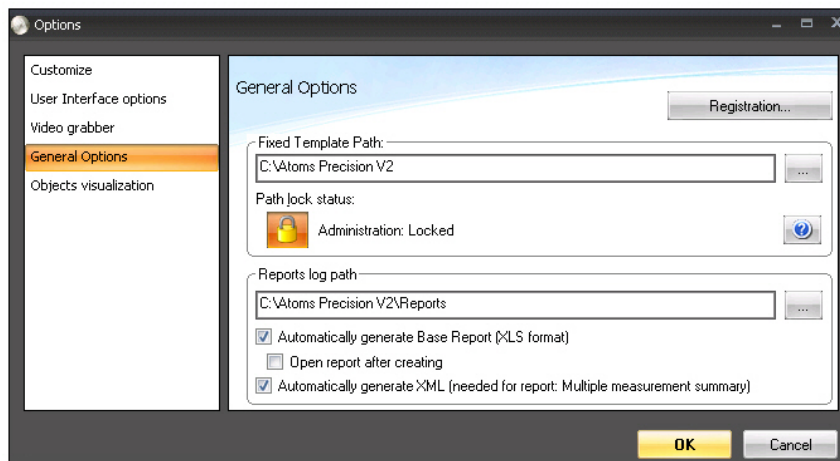


Figure 1

- Select automatically generate base report in XML and XLS. This will create base reports automatically when measurement is performed. Select ok.

## BASE REPORT

Click **Start** tab. Click **Import Source Base File** from Image source panel.

Select InspectionReport-1.dxf file from tutorials folder.

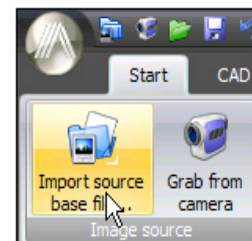


Figure 2

Go to measurement tab and Select **Load Template** command.

Load **InspectionReport-Template.atoms** from Tutorials folder as template.

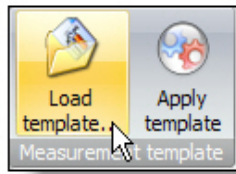


Figure 3

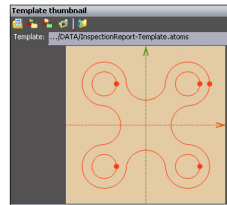


Figure 4

Select **Apply Template** command. Check Measurement lights panel to check the validation.

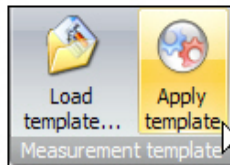


Figure 5

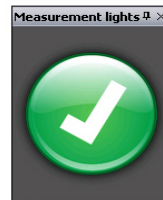


Figure 6

Base report file is created when apply template command is executed.

To open base report, select **Application** tab, Select **Print Preview / Export**, Select **Explore Auto Xml Report** folder.

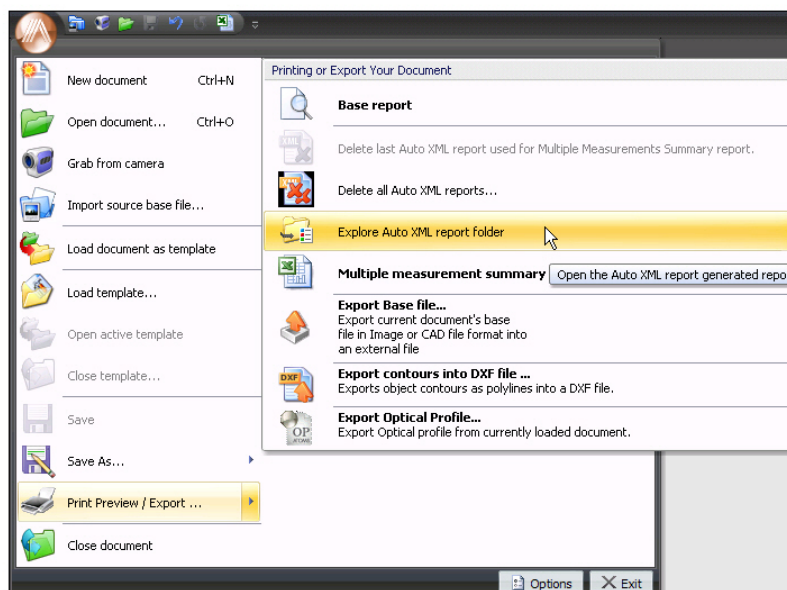


Figure 7

New folder is created with template name and report files are saved in the folder.  
 Open the folder. Report file is saved in xml and xls format.  
 File name format is Inspection time with name of inspection image.

Open XLS file.



Figure 8

Base report contains details about template, image, and optical profile. Picture images of the inspection object and dimensions measured are listed in base report.

Validation result is shown in color coding.

- Green is for dimensions with in tolerance
- Yellow is for dimensions at the maximum limits
- Red is for dimensions out of tolerance

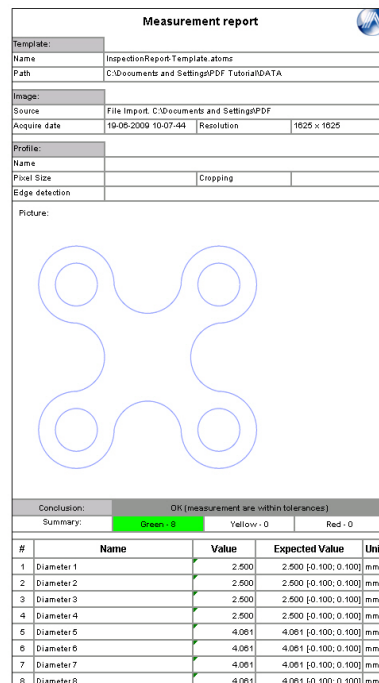


Figure 9

### MULTIPLE MEASUREMENT SUMMARY:

Multiple measurement summary can be created only when two or more base reports are available from the same template.

Click **Start** tab. Click **Import Source Base File** from Image source panel.

Select **InspectionReport-1.dxf** file from tutorials folder

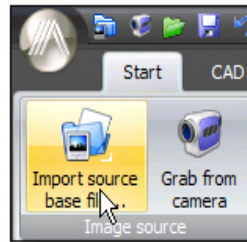


Figure 10

Go to **Measurement** tab and Select **Apply Template**.

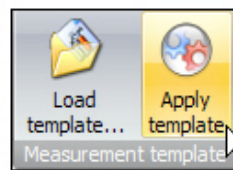


Figure 11

Select **Multiple Measurement Summary** from menu tool bar.

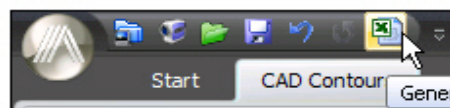


Figure 12

Filter base reports using time interval.

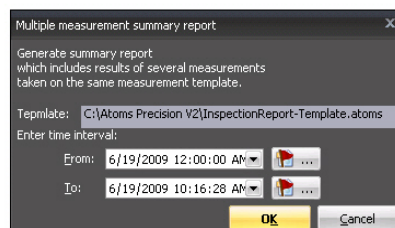


Figure 13

Figure 10

Dimension analysis is displayed using selected base reports in reports tab.  
 In log tab, Validation of individual base reports is shown.

A	B	C	D	E	F	G	H	I	J	K	
1	Template:	InspectionReport.Template.atoms									
2	Time interval:	2009.06.19.00:00:00	2009.06.19.10:16:28								
3	Application:	ATOMS Precision V2 (2.0.7.01)									
4	Prepared:	6/19/09	10:16 AM								
5											
6	<b>Name</b>		<b>Diameter 1</b>	<b>Diameter 2</b>	<b>Diameter 3</b>	<b>Diameter 4</b>	<b>Diameter 5</b>	<b>Diameter 6</b>	<b>Diameter 7</b>	<b>Diameter 8</b>	
7	<b>Unit</b>		mm	mm	mm	mm	mm	mm	mm	mm	
8	<b>Average</b>		2.500	2.500	2.500	2.500	4.061	4.061	4.061	4.061	
9	<b>Min</b>		2.500	2.500	2.500	2.500	4.061	4.061	4.061	4.061	
10	<b>Max</b>		2.500	2.500	2.500	2.500	4.061	4.061	4.061	4.061	
11	<b>Std Dev</b>		0	0	0	0	0	0	0	0	
12	<b>Delta, [Unit]/1000</b>		0	0	0	0	0	0	0	0	
13	<b>CPK</b>		1.0E+06	1.0E+06	1.0E+06	1.0E+06	1.0E+06	1.0E+06	1.0E+06	1.0E+06	
14	<b>Nominal</b>		2.500	2.500	2.500	2.500	4.061	4.061	4.061	4.061	
15	<b>Left bound</b>		2.400	2.400	2.400	2.400	3.961	3.961	3.961	3.961	
16	<b>Right bound</b>		2.600	2.600	2.600	2.600	4.161	4.161	4.161	4.161	
17	<b>Source Data Validity</b>										
18	<b>#</b>	<b>Import/Capture time</b>	<b>File name</b>	<b>Diameter 1</b>	<b>Diameter 2</b>	<b>Diameter 3</b>	<b>Diameter 4</b>	<b>Diameter 5</b>	<b>Diameter 6</b>	<b>Diameter 7</b>	<b>Diameter 8</b>
19	1	10:07:44	InspectionReport-1.dxf	2.500	2.500	2.500	2.500	4.061	4.061	4.061	4.061
20	2	10:12:22	InspectionReport-2.dxf	2.500	2.500	2.500	2.500	4.061	4.061	4.061	4.061
21	3	10:15:17	InspectionReport-1.dxf	2.500	2.500	2.500	2.500	4.061	4.061	4.061	4.061
22	4	10:16:09	InspectionReport-2.dxf	2.500	2.500	2.500	2.500	4.061	4.061	4.061	4.061

Figure 14

