

DXF Output



ATOMS
Precision V2

This tutorial focuses on how to export image contours as **DXF** file in Atoms Precision V2.

Let's get started.

Firstly, we use a camera source device to grab an image and use it to output an image contour as DXF file.

Before we grab an image from the camera source we need to make sure the camera device is properly calibrated and saved into an optical profile file.

To capture an image from a camera go to the **Start** tab, select **Grab from Camera** command and then choose the optical profile file of the camera device.

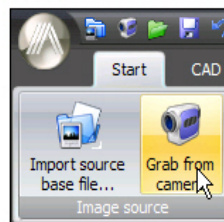


Figure 1

Now place a part under the camera and click on the **Finish Importing** command. The image is captured immediately and an object contour is created by Atoms Precision V2 automatically.

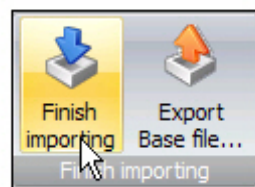


Figure 2

To Export the object contour as DXF, go to the **Application** tab, select **Print Preview/Export** and then choose the **Export contours into DXF file** command to save the dxf file.

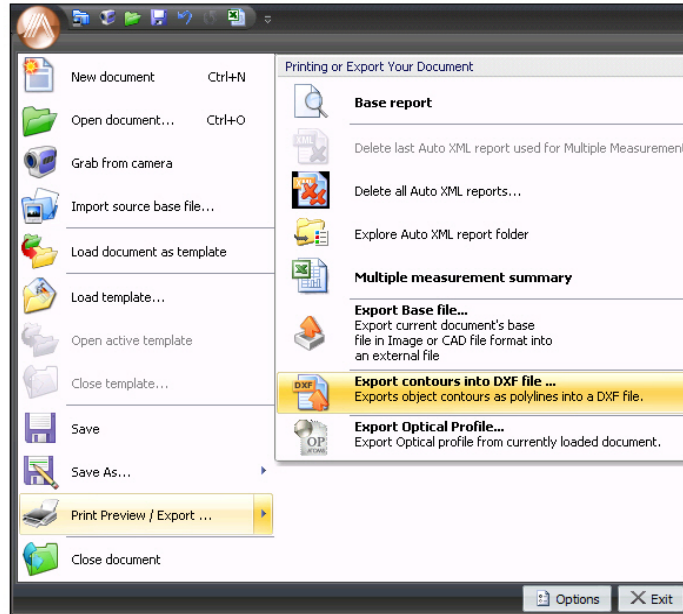


Figure 3

DXF files can be opened in any **CAD** system and used to construct 3D models or 2D sketches.

